

DATA CENTER AND NETWORK
INFRASTRUCTURE
PRODUCT SOLUTIONS



SIMPLIFIED CONNECTIVITY

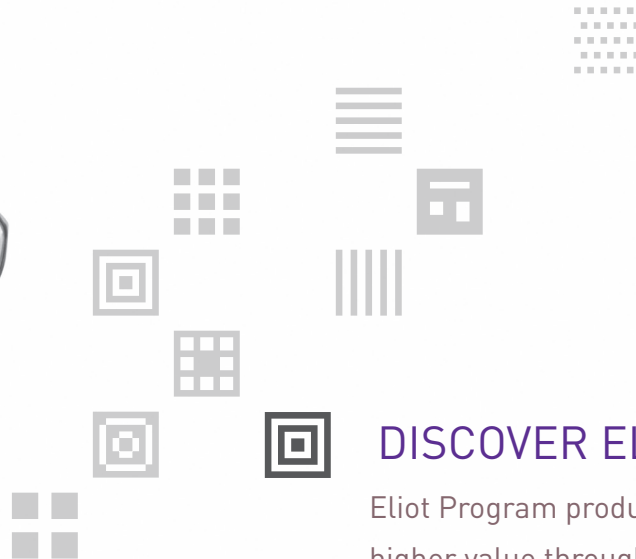


Internet of Things

introducing

ELIOT

Electricity



DISCOVER ELIOT

Eliot Program products enable and deliver higher value through the internet of things.

www.cablestogo.com/about/eliot



ELIOT IS LEGRAND'S GLOBAL IoT PROGRAM

that brings together our worldwide expertise in the built environment, speeds development of connected devices and amplifies communications wherever the Internet of Things can enhance value for all users.

Products, systems and services under Legrand's Eliot program must adhere to three important principles:

1

Enhanced Value

The products and solutions must enhance value by simplifying usage, facilitating maintenance and or personalizing the experience for users and professionals.

2

Intuitive and Easy to Use

They must be intuitive and easy to install and operate, which is part of Legrand's DNA.

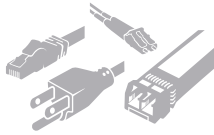
3

Respect the User

And finally, they must respect the user. Consistent with Legrand values, Eliot products, systems and services will preserve the confidentiality of user's data.

C2G is Simplified Connectivity

C2G is now a brand of Legrand which means you can leverage our additional Technical Expertise and our expanded Straightforward Solutions, while still receiving the same Effortless Experience you have come to expect from us. That is Simplified Connectivity. That is C2G, a brand of Legrand.



Widest Product Breadth

- Over 7000 stock products, including many TAA solutions
- Audio/Video and PC, Data Connectivity, Physical Infrastructure, and Power Management



End-to-End Solutions

- Start and finish your project with C2G
- Solutions for data centers, device connectivity, work spaces, and networks



Global Presence

- Facilities in 90 countries
- Sales in 180 countries
- Available field sales support



Custom Solutions and Capabilities

- Solutions for every budget
- Premium components for maximum performance
- Custom kitting capabilities



Partners in Profit

- Our products provide some of the largest margins in technology hardware
- We are dedicated to investing with our partners and aligning to their strategies



Commitment to Sustainability

- Better operations, better performance, better lives
- RoHS, R.E.A.C.H., WEEE
- #59 on Forbes list of most sustainable companies 2017



Unmatched Responsiveness

- Free technical support tools for all products
- Live chat, call, or text
- Quick quote response



Bid Pricing

- Pricing considerations at low quantity thresholds
- Government/Education discounts

Solutions from the Data Center to the Desktop...

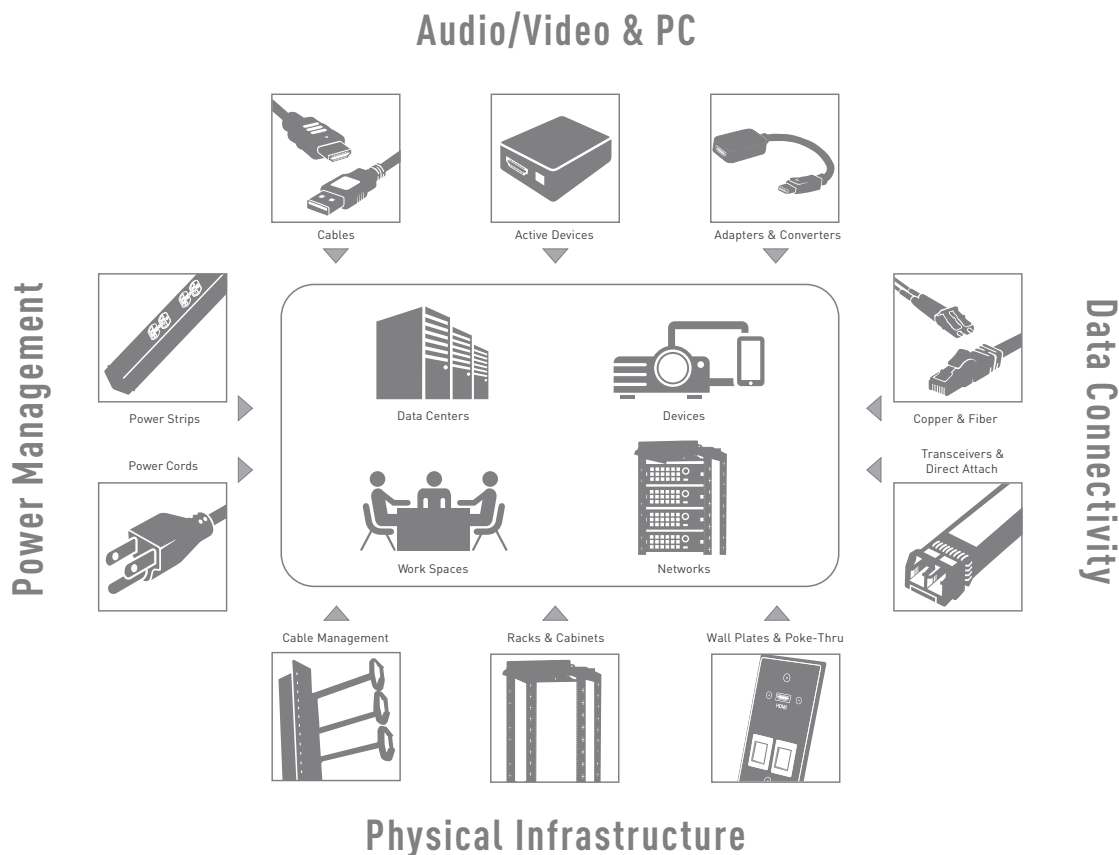
C2G offers products and solutions specifically designed to simplify connectivity in a wide range of applications including data centers, building networks, work spaces, and connecting devices. This guide focuses on data center and network infrastructure and illustrates how our products fit within the associated applications:

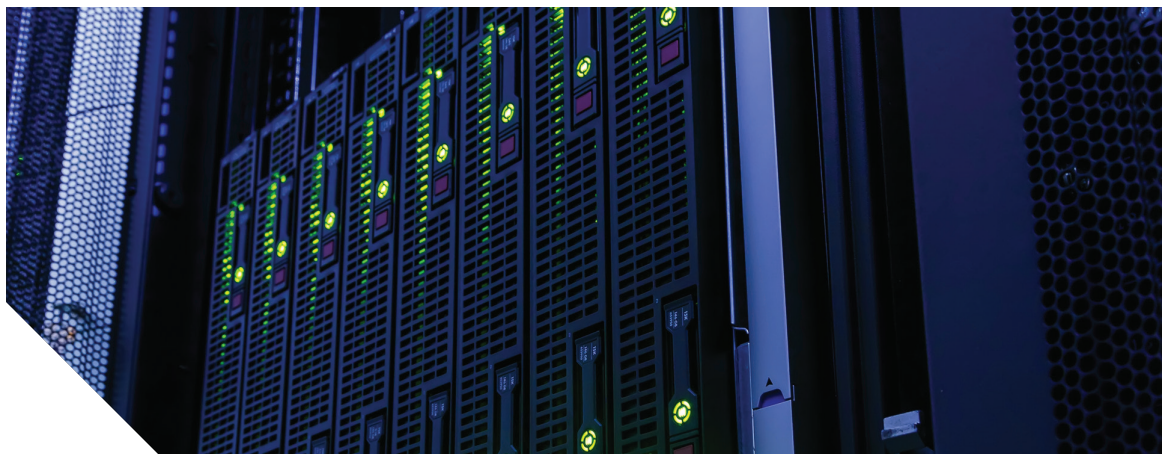
- Network Server Connectivity Solution
- Network Switch Solution
- Network Storage Solution



Products & Solutions of Simplified Connectivity

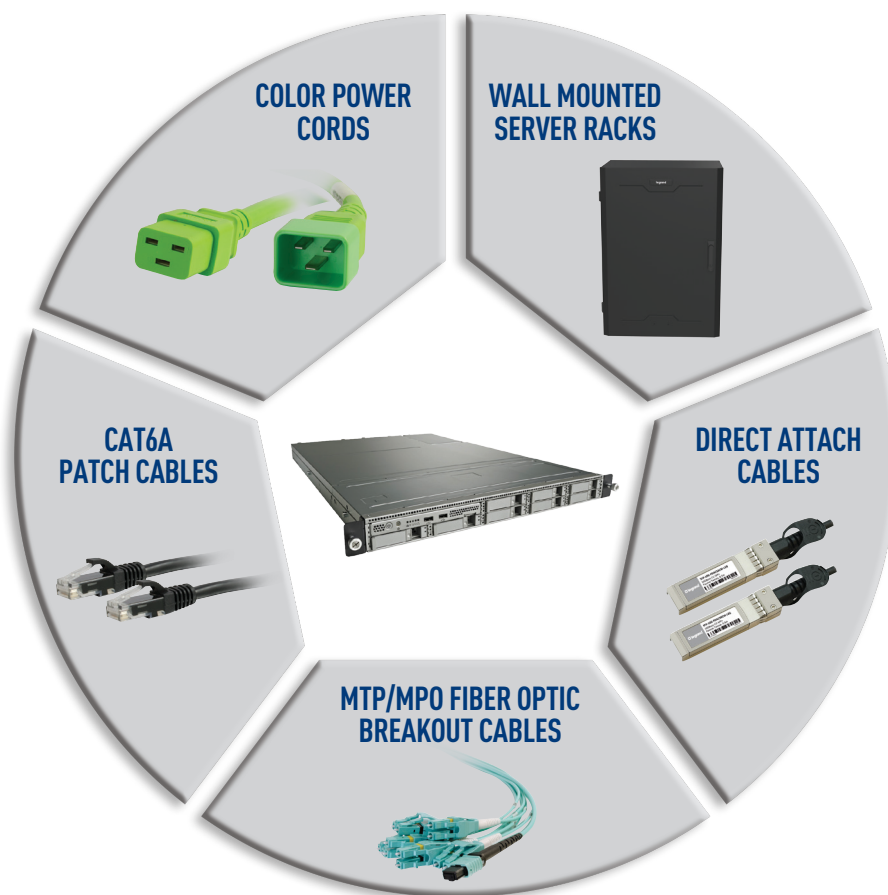
As a brand of Legrand, C2G offers an expanded range of physical infrastructure, power management, and data connectivity products and solutions that bolsters our extensive line of audio/video & PC products and solutions.





NETWORK SERVER

The server is a computer that hosts applications and provides services and data to other computers, much like the brain feeds information that enables the body to function. C2G helps to unlock the potential of the server with a wide range of products including:



COMING SOON – WALL MOUNTED SERVER CABINETS

Wall mounted server cabinets are an ideal solution for smaller applications that don't require a full-size cabinet, helping free up floor space while providing security and accessibility for network components.

Part #	Item Description
VWMSD-4RU-36-B	4RU Vertical Wall Mount Cabinet, Split Door - 36"
VWMSD-4RU-42-B	4RU Vertical Wall Mount Cabinet, Split Door - 42"
VWMSD-8RU-36-B	8RU Vertical Wall Mount Cabinet, Split Door - 36"
VWMSD-8RU-42-B	8RU Vertical Wall Mount Cabinet, Split Door - 42"
VWMFD-8RU-36-B	8RU Vertical Wall Mount Cabinet, Full Door - 36"
VWMFD-4RU-36-B	4RU Vertical Wall Mount Cabinet, Full Door - 36"



DIRECT ATTACH CABLES (DAC)

Direct Attach Cables enhance the capabilities of network devices, allowing them to expand by providing the physical interconnect between network devices.

Part #	Item Description
SFP+ Passive Ethernet Cables (MSA and TAA Compliant)	
SFP10GPDAC50CM-LEG	10GBase-CU SFP+ to SFP+ Direct Attach Cable (Passive Twinax, 0.5m)
SFP-10G-PDAC1M-LEG	10GBase-CU SFP+ to SFP+ Direct Attach Cable (Passive Twinax, 1m)
SFP-10G-PDAC2M-LEG	10GBase-CU SFP+ to SFP+ Direct Attach Cable (Passive Twinax, 2m)
SFP-10G-PDAC3M-LEG	10GBase-CU SFP+ to SFP+ Direct Attach Cable (Passive Twinax, 3m)
SFP-10G-PDAC4M-LEG	10GBase-CU SFP+ to SFP+ Direct Attach Cable (Passive Twinax, 4m)
SFP-10G-PDAC5M-LEG	10GBase-CU SFP+ to SFP+ Direct Attach Cable (Passive Twinax, 5m)
QSFP+ Passive Ethernet Cables (MSA and TAA Compliant)	
QSFP40GPDAC50C-LEG	40GBase-CU QSFP+ to QSFP+ Direct Attach Cable (Passive Twinax, 0.5m)
QSFP40GPDAC1M-LEG	40GBase-CU QSFP+ to QSFP+ Direct Attach Cable (Passive Twinax, 1m)
QSFP40GPDAC2M-LEG	40GBase-CU QSFP+ to QSFP+ Direct Attach Cable (Passive Twinax, 2m)
QSFP40GPDAC3M-LEG	40GBase-CU QSFP+ to QSFP+ Direct Attach Cable (Passive Twinax, 3m)
QSFP40GPDAC5M-LEG	40GBase-CU QSFP+ to QSFP+ Direct Attach Cable (Passive Twinax, 5m)
QSFP40GPDAC7M-LEG	40GBase-CU QSFP+ to QSFP+ Direct Attach Cable (Passive Twinax, 7m)



MTP/MPO FIBER OPTIC BREAKOUT CABLES

High-density MTP/MPO cables are perfect for applications with limited space, making it possible to run 12 fibers through a single cable with one easy plug-in.

Part #	Item Description
31322	1m MTP® Compatible MPO to 6 Duplex Fiber Breakout Cable OM3 Riser Rated (OFNR)
31323	2m MTP Compatible MPO to 6 Duplex Fiber Breakout Cable OM3 Riser Rated (OFNR)
31324	3m MTP Compatible MPO to 6 Duplex Fiber Breakout Cable OM3 Riser Rated (OFNR)
31325	1m MTP Compatible MPO to 4 Duplex Fiber Breakout Cable OM3 Riser Rated (OFNR)
31326	2m MTP Compatible MPO to 4 Duplex Fiber Breakout Cable OM3 Riser Rated (OFNR)
31327	3m MTP Compatible MPO to 4 Duplex Fiber Breakout Cable OM3 Riser Rated (OFNR)
31328	1m MTP Compatible MPO to 6 Duplex Fiber Breakout Cable OM4 Riser Rated (OFNR)
31329	2m MTP Compatible MPO to 6 Duplex Fiber Breakout Cable OM4 Riser Rated (OFNR)
31330	3m MTP Compatible MPO to 6 Duplex Fiber Breakout Cable OM4 Riser Rated (OFNR)
31331	1m MTP Compatible MPO to 4 Duplex Fiber Breakout Cable OM4 Riser Rated (OFNR)
31332	2m MTP Compatible MPO to 4 Duplex Fiber Breakout Cable OM4 Riser Rated (OFNR)
31333	3m MTP Compatible MPO to 4 Duplex Fiber Breakout Cable OM4 Riser Rated (OFNR)



CAT6A PATCH CABLES

Cat6a patch cables are ideal for use with 10GBase-T ports and equipment, such as network adapters, wireless access points and patch panels, and permits 10 Gigabit per second transmission over a 4-twisted pair cable, enabling connections in a channel up to 100 meters.



00655



00723



00689



00757

LENGTH	GRAY	BLUE	BLACK	AQUA
6in	00972	00974	00976	00978
1ft	00655	00689	00723	00757
2ft	00656	00690	00724	00758
3ft	00657	00691	00725	00759
4ft	00658	00692	00726	00760
5ft	00659	00693	00727	00761
6ft	00660	00694	00728	00762
7ft	00661	00695	00729	00763
8ft	00662	00696	00730	00764
9ft	00663	00697	00731	00765
10ft	00664	00698	00732	00766
12ft	00665	00699	00733	00767
14ft	00666	00700	00734	00768
15ft	00667	00701	00735	00769

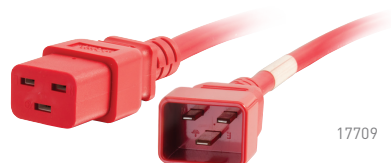
COLOR POWER CORDS

Color power cords deliver AC power to servers while also allowing for quick identification in a high-density data environment.



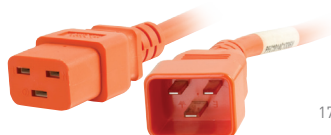
17708

BLUE							
1ft	2ft	3ft	4ft	5ft	6ft	8ft	10ft
17708	17714	17720	1776	17732	17738	17744	17750



17709

RED							
1ft	2ft	3ft	4ft	5ft	6ft	8ft	10ft
17709	17715	17721	17727	17733	17739	17745	17751



17710

ORANGE							
1ft	2ft	3ft	4ft	5ft	6ft	8ft	10ft
17710	17716	17722	17728	17734	17740	17746	17752



17711

GREEN							
1ft	2ft	3ft	4ft	5ft	6ft	8ft	10ft
17711	17717	17723	17729	17735	17741	17747	17753



17712

YELLOW							
1ft	2ft	3ft	4ft	5ft	6ft	8ft	10ft
17712	17718	17724	17730	17736	17742	17748	17754



17713

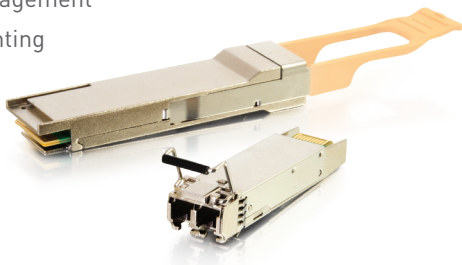
WHITE							
1ft	2ft	3ft	4ft	5ft	6ft	8ft	10ft
17713	17719	17725	17731	17737	17743	17749	17755

Custom Solutions

Honing Your Ideas From Concept To Finished Product

CUSTOM ENCLOSURES

- Sales engineering team developing customer specific solutions
- 3D web reviews to develop and review concepts and ideas
- Physical modifications including:
 - Height, width, depth
 - Color
 - Cable management installation and hole locations for specific cable entry locations (top panels and side panels)
 - Airflow management
 - Power mounting



TRANSCEIVERS AND DAC

- Programming for specific applications, including multiple manufacturers
- Lengths
- Connector configurations



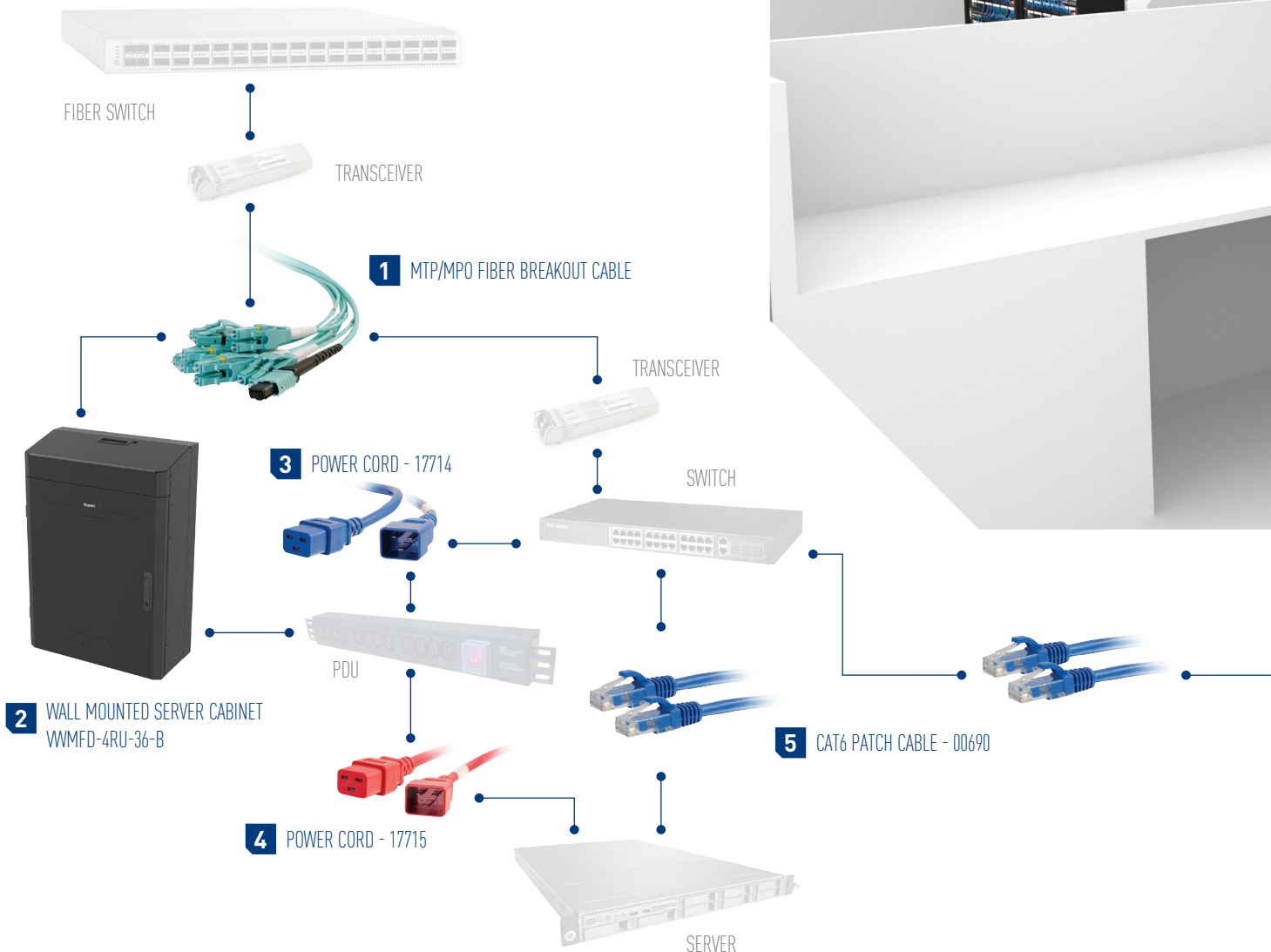
FIBER, COPPER AND POWER

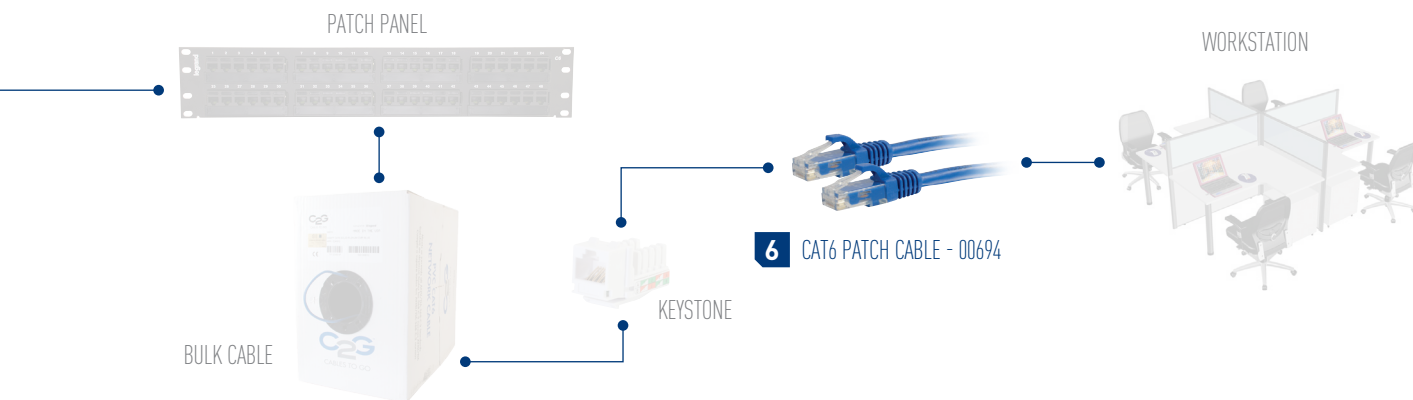
- Colors
- Lengths
- Connector configurations
- Jacket types



SERVER CONNECTIVITY COMPLETE SOLUTION

With today's digital transformation, an efficient, well organized network needs to be fast, while also providing a safe, secure location for data and equipment. More companies are adopting Edge computing, a key part in the Internet of Things (IoT), to process massive amounts of data closer to the source. With wall mounted server cabinets and solutions that are closer to the workstation, processing time goes down and productivity goes up.

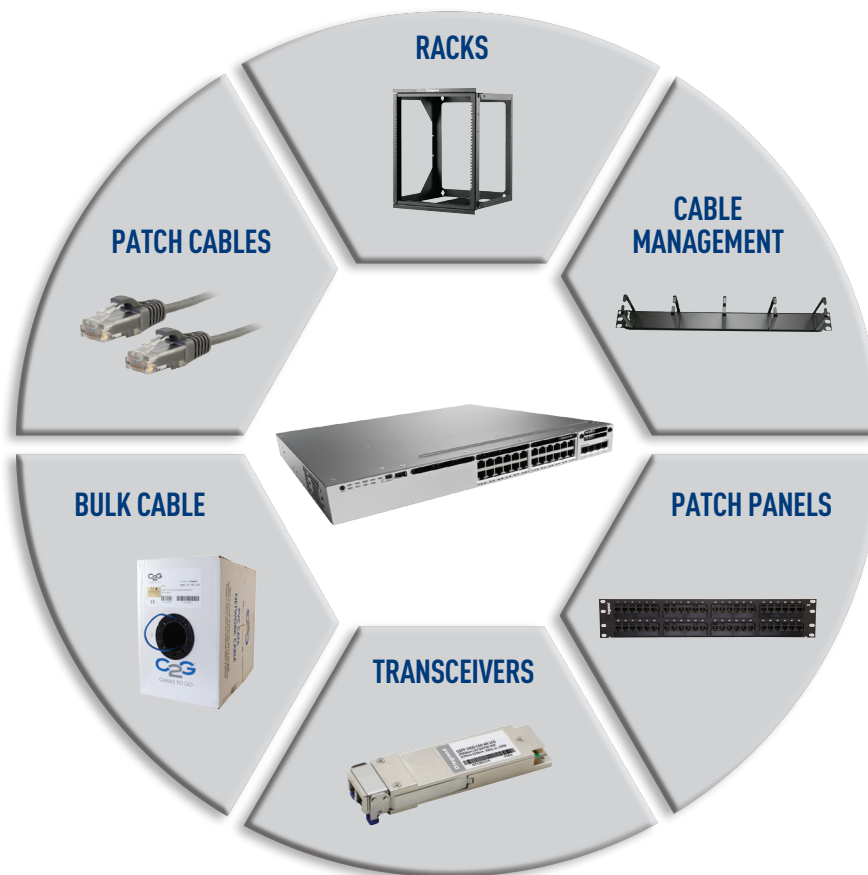


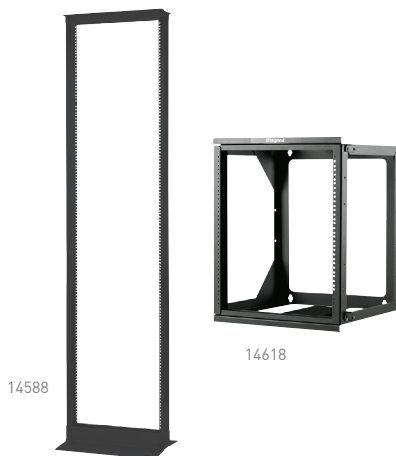




NETWORK SWITCH

The switch electrically and logically connects other devices and manages the flow of data across the network. C2G helps to unlock the potential of network switches with a wide range of products including:





RACKS

Racks and brackets provide a mounting location for the patch panel and networking electronics that provide the network and Internet connectivity to the IP phone and desktop computer.

45U 2-POST OPEN FRAME RACKS

Part #	Item Description
14588	45U 2-Post Open Frame Rack (TAA Compliant) - Black
14589	45U 2-Post Open Frame Rack (TAA Compliant) - Aluminum

12U & 25U HINGED WALL MOUNT OPEN FRAME RACKS

Part #	Item Description
14618	12U Hinged Wall Mount Open Frame Rack - 18in Deep (TAA Compliant)
14619	25U Hinged Wall Mount Open Frame Rack - 18in Deep (TAA Compliant)

CABLE MANAGEMENT

Cable management solutions provide security, increased air flow and protection for cables, helping to limit the possibility of damage by ensuring bend limitations are met.

FIBER CABLE MANAGEMENT



Part #	Item Description
39101	1U 3-Panel Rack-Mount Fiber Optic Enclosure – TAA Compliant
39102	2U 6-Panel Rack-Mount Fiber Optic Enclosure – TAA Compliant
39103	4U 12-Panel Rack-Mount Fiber Optic Enclosure – TAA Compliant
31114	12-Strand, LC Duplex, PB Insert, Multimode, Aqua Adapter Panel – TAA Compliant
31117	24-Strand, LC Quad, PB Insert, Multimode, Aqua Adapter Panel – TAA Compliant



39101

COPPER CABLE MANAGEMENT



Part #	Item Description
14593	1U Horizontal Cable Management Panel with 5 D-Rings – TAA Compliant
14597	2U Single-Sided Horizontal Cable Management Panel – TAA Compliant
14598	2U Double-Sided Horizontal Cable Management Panel – TAA Compliant



14593

PATCH PANELS

The patch panel provides a physical connection from the solid conductor horizontal or backbone cabling running through the walls to patch cables that connect to network electronics in the wiring closet.



37200



03857

CAT6 PATCH PANELS

Part #	Item Description
37199	24-Port Cat6 110-Type 1-RU Patch Panel
37200	48-Port Cat6 110-Type 2-RU Patch Panel

KEYSTONE PATCH PANELS

Part #	Item Description
03857	12-Port Blank Keystone/Multimedia Patch Panel
03859	24-Port Blank Keystone/Multimedia Patch Panel

TRANSCEIVERS



C2G's Transceivers are TAA compliant and are capable of all the functions and features supported by their OEM counterparts. Each transceiver is rigorously tested to ensure 100% compatibility with the same equipment as their OEM equivalents. With 265 transceivers in stock, as well as over 4,000 others available for shipping within 1-3 business days—finding the right transceiver for any application is fast and simple.

Our Transceivers are compatible with these OEMs and more:



QSFP28

Part # QSFP100GLR4AR-LEG

- 7 model types stocked
- High speed 100-Gigabit connectivity
- Allows for connections up to 10km
- 1270nm to 1330nm wavelength signaling
- Supports Digital Optical Monitoring (DOM)



CFP2

Part # CFP2-100G-LR4-LEG

- 4 model types stocked
- High speed 100-Gigabit connectivity
- Allows for connections up to 10km
- 1310nm wavelength signaling
- Supports Digital Optical Monitoring (DOM)



CFP

Part # CFP-100G-SR10-LEG

- 8 model types stocked
- High speed 100-Gigabit connectivity
- Allows for connections up to 10km
- 1310nm wavelength signaling
- Supports Digital Optical Monitoring (DOM)



QSFP+

Part # QSFP40GBASESR4-LEG

- 53 model types stocked
- High speed 40-Gigabit connectivity
- Allows for connections up to 150m
- 850nm wavelength signaling
- Supports Digital Optical Monitoring (DOM)



X2

Part # X2-10GB-LR-LEG

- 3 model types stocked
- High speed 10-Gigabit connectivity
- Allows for connections up to 220m
- 1310nm wavelength signaling
- Supports Digital Optical Monitoring (DOM)



SFP

Part # SFP-10G-SR-LEG

- 21 model types stocked
- 1 to 10-Gigabit connectivity
- Allows for connection maximums of 550m to 80km
- 850, 1310, 1490, 1550nm wavelength signaling
- Some models support Digital Optical Monitoring (DOM)



XFP

Part # EX-XFP-10GE-LR-LEG

- 5 model types stocked
- 10-Gigabit connectivity
- Allows for connection maximums of 300m or 10km
- 850 and 1310nm wavelength signaling
- Supports Digital Optical Monitoring (DOM)



SFP

Part # AGM73IF-LEG

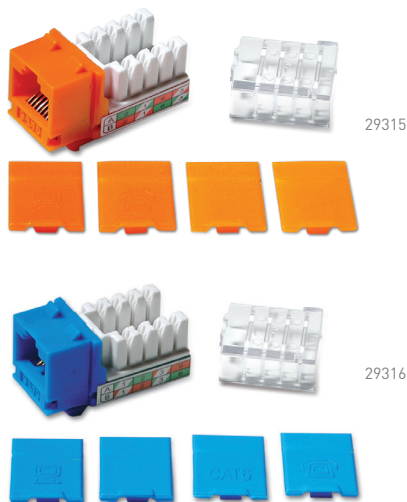
- 39 model types stocked
- 100-Megabit to 1-Gigabit connectivity
- Allows for connection maximums of 300m or 70km
- 850, 1310, 1550nm wavelength signaling
- Some models support Digital Optical Monitoring (DOM)



COPPER SFP

Part # 453154-B21-LEG

- 11 model types stocked
- 10-Megabit, 100-Megabit, and 1-Gigabit connectivity
- Allows for connection maximums of 100m
- Some models support Digital Optical Monitoring (DOM)



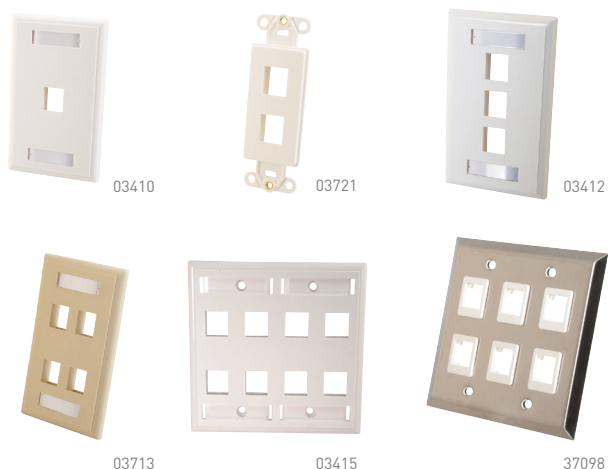
KEYSTONE JACKS

These keystone jacks provide a physical connection from the patch cable to the horizontal network cabling in the walls.

Part #	Item Description
29310	Cat6 RJ45 UTP Keystone Jack - Ivory
29311	Cat6 RJ45 UTP Keystone Jack - White
29313	Cat6 RJ45 UTP Keystone Jack - Black
29314	Cat6 RJ45 UTP Keystone Jack - Red
29315	Cat6 RJ45 UTP Keystone Jack - Orange
29316	Cat6 RJ45 UTP Keystone Jack - Blue
29317	Cat6 RJ45 UTP Keystone Jack - Green
29318	Cat6 RJ45 UTP Keystone Jack - Yellow

KEYSTONE WALL PLATES

These keystone wall plates provide an in-wall mount for the keystone to be used as a transition point for the patch cable from the IP phone, or for the desktop computer to the horizontal network cabling that will be attached to the patch panel.



Part #	Item Description
03410	1-Port Keystone Single Gang Wall Plate - White
03411	2-Port Keystone Single Gang Wall Plate - White
03412	3-Port Keystone Single Gang Wall Plate - White
03413	4-Port Keystone Single Gang Wall Plate - White
03414	6-Port Keystone Single Gang Wall Plate - White
03415	8-Port Keystone Double Gang Wall Plate - White
03710	1-Port Keystone Single Gang Wall Plate - Ivory
03711	2-Port Keystone Single Gang Wall Plate - Ivory
03712	3-Port Keystone Single Gang Wall Plate - Ivory
03713	4-Port Keystone Single Gang Wall Plate - Ivory
03714	6-Port Keystone Single Gang Wall Plate - Ivory
03720	2-Port Keystone Wall Plate - Ivory
03721	2-Port Keystone Wall Plate - White
03722	Duplex 2-Port NEMA 106 Wall Plate - Ivory
37093	1-Port Keystone Single Gang Wall Plate - Stainless Steel
37094	2-Port Keystone Single Gang Wall Plate - Stainless Steel
37095	3-Port Keystone Single Gang Wall Plate - Stainless Steel
37096	4-Port Keystone Single Gang Wall Plate - Stainless Steel
37097	4-Port Keystone Double Gang Wall Plate - Stainless Steel
37098	6-Port Keystone Double Gang Wall Plate - Stainless Steel
37099	8-Port Keystone Double Gang Wall Plate - Stainless Steel

BULK CABLE

This bulk cable is the horizontal network cabling that connects from the keystone jack to the patch panels.

Part #	Item Description
43405	1000ft Cat6 Bulk Unshielded (UTP) Ethernet Network Cable with Stranded Conductors - In-Wall CM-Rated - Blue
43406	1000ft Cat6 Bulk Unshielded (UTP) Ethernet Network Cable with Stranded Conductors - In-Wall CM-Rated - Gray
56015	500ft Cat6 Bulk Unshielded (UTP) Ethernet Network Cable with Solid Conductors - Riser CMR-Rated - Blue
56016	500ft Cat6 Bulk Unshielded (UTP) Ethernet Network Cable with Solid Conductors - Riser CMR-Rated - Gray
56017	1000ft Cat6 Bulk Unshielded (UTP) Ethernet Network Cable with Solid Conductors - Riser CMR-Rated - Blue
56018	1000ft Cat6 Bulk Unshielded (UTP) Ethernet Network Cable with Solid Conductors - Riser CMR-Rated - Gray
56026	500ft Cat6 Bulk Unshielded (UTP) Ethernet Network Cable with Solid Conductors - Riser CMR-Rated - Black
56027	1000ft Cat6 Bulk Unshielded (UTP) Ethernet Network Cable with Solid Conductors - Riser CMR-Rated - Black
56019	1000ft Cat6 Bulk Unshielded (UTP) Ethernet Network Cable with Solid Conductors - Plenum CMP-Rated - Blue
56020	1000ft Cat6 Bulk Unshielded (UTP) Ethernet Network Cable with Solid Conductors - Plenum CMP-Rated - Gray
56023	1000ft Cat6 Bulk Unshielded (UTP) Ethernet Network Cable with Solid Conductors - Plenum CMP-Rated - Black

Note: Cat6 or Cat6a options may be necessary based on the network application.

CAT6 SLIM PATCH CABLES

The 28AWG Slim Patch Cables are perfect for high density network applications, providing the physical connection between the switch and patch panel, allowing data to be sent and received. The 36% reduction in cord diameter allows for increased airflow and a tighter bend radius of the cable—enabling it to be easily routed through cable management panels.

LENGTH	GRAY	BLUE	BLACK	GREEN	RED	YELLOW	ORANGE	PURPLE	WHITE	PINK	
6in	01084	01071	01097	—	—	—	—	—	—	—	 01096
1ft	01085	01072	01098	01160	01165	01170	01175	01180	01185	01190	 01083
1.5ft	01086	01073	01099	—	—	—	—	—	—	—	
2ft	01087	01074	01100	—	—	—	—	—	—	—	
2.5ft	01088	01075	01101	—	—	—	—	—	—	—	 01099
3ft	01089	01076	01102	01161	01166	01171	01176	01181	01186	01191	
4ft	01090	01077	01103	—	—	—	—	—	—	—	
5ft	01091	01078	01104	01162	01167	01172	01177	01182	01187	01192	 01160
6ft	01092	01079	01105	—	—	—	—	—	—	—	
7ft	01093	01080	01106	01163	01168	01173	01178	01183	01188	01193	
8ft	01094	01081	01107	—	—	—	—	—	—	—	 01185
9ft	01095	01082	01108	—	—	—	—	—	—	—	
10ft	01096	01083	01109	01164	01169	01174	01179	01184	01189	01194	 01190

Note: Cat6 or Cat6a options may be necessary based on the network application.

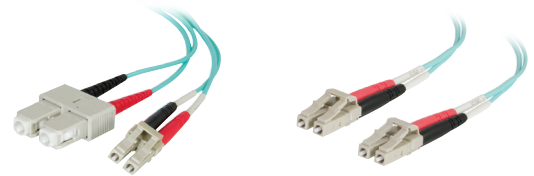
FIBER OPTIC CABLES

Fiber optic cables are designed for data center applications, transmitting data over long distances and providing higher bandwidth, while being less susceptible to interference.

50/125 MULTIMODE FIBER OPTIC OM4 CABLES

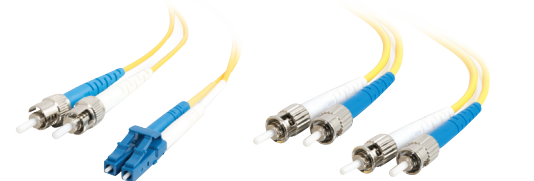


	0.5M	1M	2M	3M	4M	5M	6M	7M	8M	9M	10M	12M	15M	18M	20M	25M	30M	50M
LC-SC	01143	01008	01009	01010	01144	01011	01145	01146	01147	01148	01149	01150	01151	01152	01153	01154	01155	01156
LC-LC	01136	00997	00998	00999	01000	01001	01002	01003	01004	01005	01006	01007	01137	01138	01139	01140	01141	01142



9/125 DUPLEX SINGLE-MODE FIBER OPTIC OS2 CABLES

	1M	2M	3M	4M	5M	6M	7M	8M	9M	10M	15M	20M	30M
LC-LC	29191	26264	28758	37460	26566	37461	37462	08355	37463	25977	37464	37465	37466
LC-SC	29190	26260	29920	37467	28950	37468	37469	08356	37470	28523	37471	37472	37473
LC-ST	37474	37475	37476	37477	37478	37479	37480	37481	37482	37483	37484	37485	37486
SC-SC	20808	20455	12505	37487	16816	37488	37489	21763	37490	18575	37491	37492	37493
SC-ST	18310	15289	13478	37494	24762	37495	37496	31796	37497	13479	37498	37499	37453
ST-ST	29951	08353	13701	37454	25933	37455	37456	08354	37457	25885	37458	37459	37380



COMING SOON!

Legrand

Wall Mounted Server Cabinets



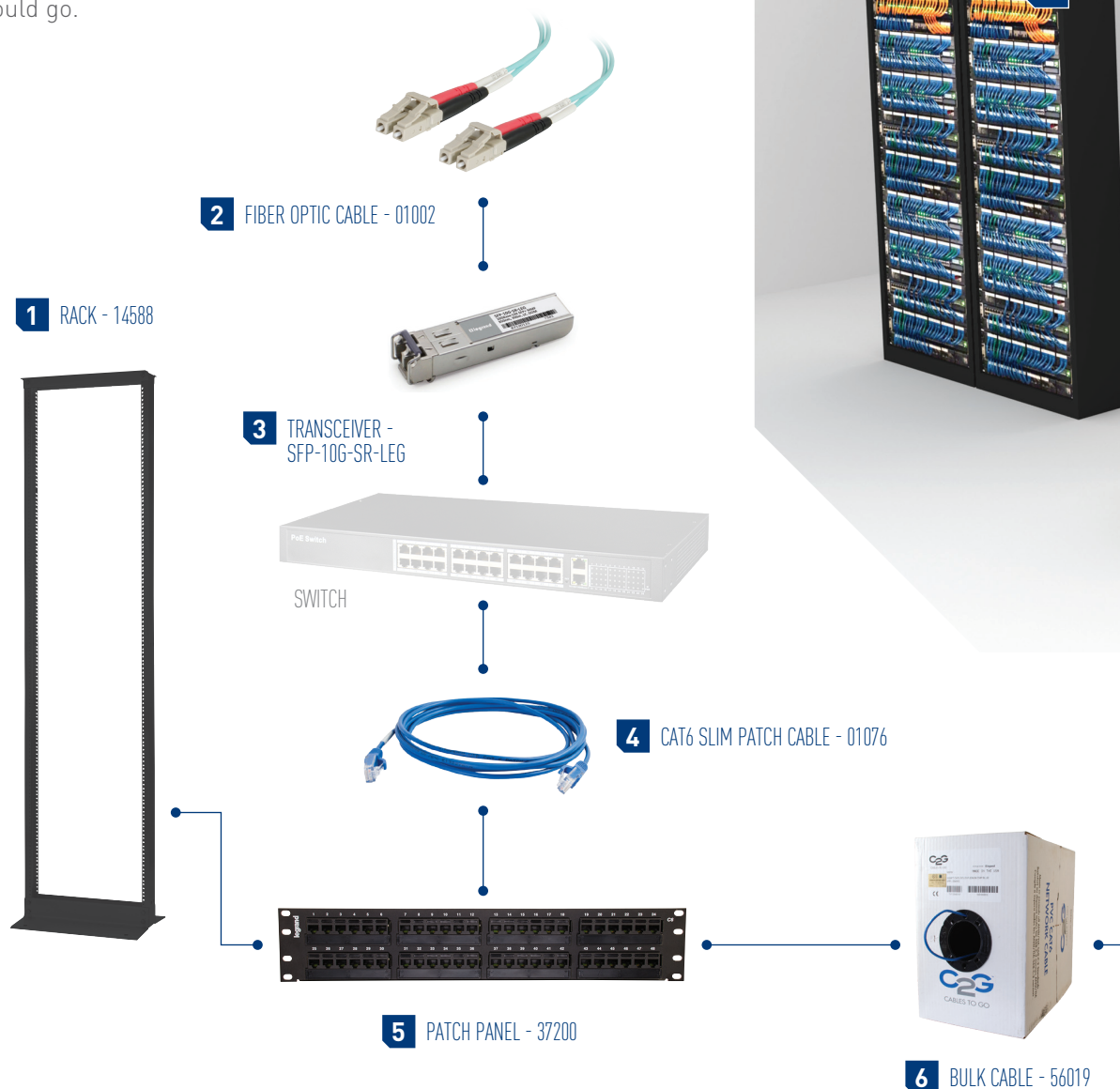
Affordable, Adaptable, Safe & Secure!

Legrand's Vertical Wall Mounted Cabinets are designed to secure and organize 4RU or 8RU of EIA-Standard 19" rack equipment in locations with limited floor space. Perfect for small offices, schools, retrofitting, and EDGE computing. These cabinets offer the flexibility to fit the system needs of today and also for the future as technology changes.

- Secures 4RU and 8RU of 19in rack equipment
- Vertical wall mounts include the Lever Lock™ design
- 0 RU patching
- Installation instructions ensure that the unit meets UL 2416 certification with a 150 pound rating

SWITCH
COMPLETE
SOLUTION

A switch is a crucial part of the complete data center and network infrastructure. Switches are used to control the delivery and receipt of data to and from specific locations, regulating the flow of traffic for greater security and efficiency of the network. From the router to the storage device, to the end user's desktop computer—switches direct data where it should go.





7 KEYSTONE - 29311

8 CAT6 SLIM PATCH CABLE - 01076

DESKTOP COMPUTER





NETWORK STORAGE

Network storage provides mass data storage that is accessible by computers connected to the network. C2G helps to unlock the potential of network storage with a wide range of products including:





QC422442

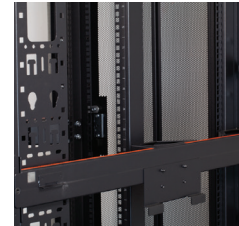


QC422942

CABINETS

Cabinets are an ideal solution for mounting network storage devices while providing security and accessibility in a controlled area.

Part #	Item Description
QC422442	42U Q-Series Server Cabinet - 600mm [23.62in] Wide - TAA Compliant
QC422942	42U Q-Series Server Cabinet - 750mm [29.53in] Wide - TAA Compliant



AIR FLOW MANAGEMENT

Accessories supporting proper air flow management are ideal within a rack or cabinet to aid with venting and keeping the critical equipment cool.



14631

FILLER PANELS



Part #	Item Description
14631	1U 19in Tool-Less Snap-In Filler Panel Multipack (2 pack)
14632	2U 19in Tool-Less Snap-In Filler Panel Multipack (2 pack)



14599

PASS-THROUGH BRUSH STRIPS



Part #	Item Description
14599	1U Cable Pass-Through Panel with Brush Strip
14600	2U Cable Pass-Through Panel with Brush Strip



QC4229SCR

SIDE CHANNEL COVER



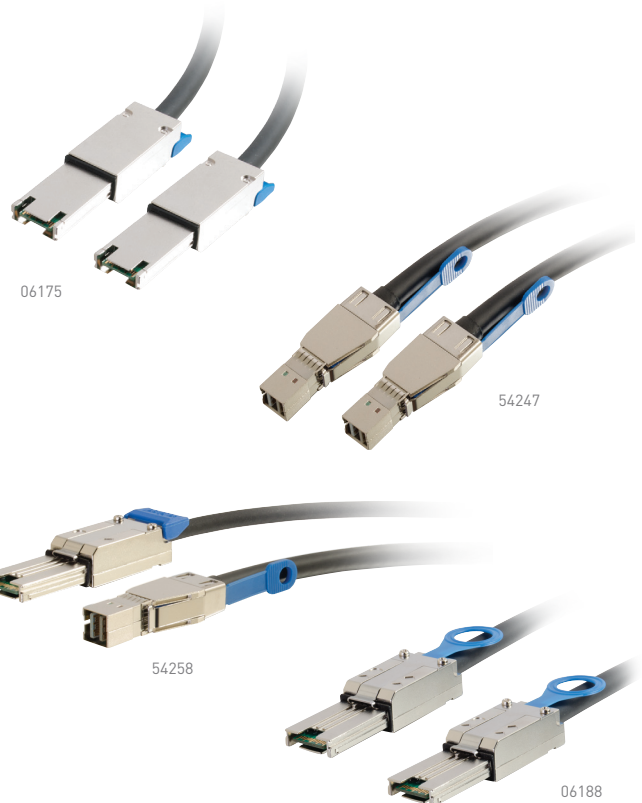
Part #	Item Description
QC4229SCR	42U Q-Series Side Channel Cover for 750mm [29.53in] Wide Server Cabinets

MINI-SAS CABLES

Mini-SAS cables were designed to connect storage area network (SAN) devices, hard drives, or other SAS interface devices together—allowing for data to be sent and received.

PASSIVE MINI-SAS CABLES

Part #	Item Description
06175	0.5m Passive External Mini-SAS Cable [1.6ft] (TAA Compliant)
06176	1m Passive External Mini-SAS Cable [3.3ft]
06177	2m Passive External Mini-SAS Cable [6.6ft]
06178	3m Passive External Mini-SAS Cable [9.8ft]
06179	4m Passive External Mini-SAS Cable [13.1ft]
06180	5m Passive External Mini-SAS Cable [16.4ft]
06182	6m Passive External Mini-SAS Cable [19.7ft]
06181	5m Passive External Mini-SAS Cable - Equalized [16.4ft]
06183	6m Passive External Mini-SAS Cable - Equalized [19.7ft]
06184	8m Passive External Mini-SAS Cable - Equalized [26.2ft]
06185	9m Passive External Mini-SAS Cable - Equalized [29.5ft]
06186	10m Passive External Mini-SAS Cable - Equalized [32.8ft]
06187	15m Passive External Mini-SAS Cable - Equalized [49.2ft]
16193	0.5m Internal Mini-SAS Cable [1.6ft] (TAA Compliant)
16194	1m Internal Mini-SAS Cable [3.3ft]



MINI-SAS HD CABLES

Part #	Item Description
54247	0.5m Mini-SAS HD to Mini-SAS HD Cable
54248	1m Mini-SAS HD to Mini-SAS HD Cable
54249	2m Mini-SAS HD to Mini-SAS HD Cable
54250	3m Mini-SAS HD to Mini-SAS HD Cable
54251	4m Mini-SAS HD to Mini-SAS HD Cable
54252	5m Mini-SAS HD to Mini-SAS HD Cable
54253	6m Mini-SAS HD to Mini-SAS HD Cable
54254	0.5m Mini-SAS HD to Mini-SAS Cable
54255	1m Mini-SAS HD to Mini-SAS Cable
54256	2m Mini-SAS HD to Mini-SAS Cable
54257	3m Mini-SAS HD to Mini-SAS Cable
54258	5m Mini-SAS HD to Mini-SAS Cable
54259	6m Mini-SAS HD to Mini-SAS Cable

ACTIVE MINI-SAS CABLES

Part #	Item Description
06188	5m Active External Mini-SAS Cable [16.4ft] (TAA Compliant)
06189	10m Active External Mini-SAS Cable [32.8ft]
06190	15m Active External Mini-SAS Cable [49.2ft]
06191	20m Active External Mini-SAS Cable [65.6ft]
06192	25m Active External Mini-SAS Cable [82ft]

LOCKING POWER CORDS

Providing power to a storage device is critical, and a secure connection provides peace of mind. Ensuring secure power connections to storage devices helps to prevent data loss or corruption.

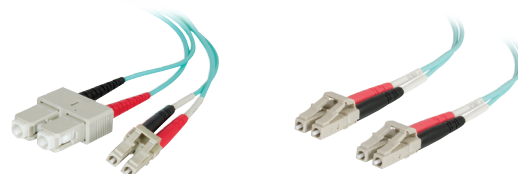


Part #	Item Description
10357	1ft Locking C14 to C13 10A 250V Power Cord – Black (TAA Compliant)
10358	2ft Locking C14 to C13 10A 250V Power Cord – Black
10359	3ft Locking C14 to C13 10A 250V Power Cord – Black
10360	6ft Locking C14 to C13 10A 250V Power Cord – Black
10361	10ft Locking C14 to C13 10A 250V Power Cord – Black
10362	15ft Locking C14 to C13 10A 250V Power Cord – Black

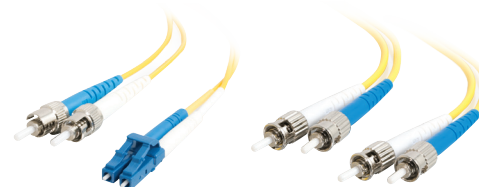
FIBER OPTIC CABLES

Fiber optic cables are designed for data center applications, transmitting data over long distances and providing higher bandwidth, while being less susceptible to interference.

50/125 MULTIMODE FIBER OPTIC OM4 CABLES



	0.5M	1M	2M	3M	4M	5M	6M	7M	8M	9M	10M	12M	15M	18M	20M	25M	30M	50M
LC-SC	01143	01008	01009	01010	01144	01011	01145	01146	01147	01148	01149	01150	01151	01152	01153	01154	01155	01156
LC-LC	01136	00997	00998	00999	01000	01001	01002	01003	01004	01005	01006	01007	01137	01138	01139	01140	01141	01142



9/125 DUPLEX SINGLE-MODE FIBER OPTIC OS2 CABLES

	1M	2M	3M	4M	5M	6M	7M	8M	9M	10M	15M	20M	30M
LC-LC	29191	26264	28758	37460	26566	37461	37462	08355	37463	25977	37464	37465	37466
LC-SC	29190	26260	29920	37467	28950	37468	37469	08356	37470	28523	37471	37472	37473
LC-ST	37474	37475	37476	37477	37478	37479	37480	37481	37482	37483	37484	37485	37486
SC-SC	20808	20455	12505	37487	16816	37488	37489	21763	37490	18575	37491	37492	37493
SC-ST	18310	15289	13478	37494	24762	37495	37496	31796	37497	13479	37498	37499	37453
ST-ST	29951	08353	13701	37454	25933	37455	37456	08354	37457	25885	37458	37459	37380

CAT6 SNAGLESS PATCH CABLES

Copper cabling provides the physical connection between the switch and storage, allowing data to be sent and received over shorter distances.

LENGTH	GRAY	BLUE	BLACK	GREEN	RED	YELLOW	ORANGE	PURPLE	WHITE	PINK
6in	00951	00952	00953	00954	00955	00956	00957	00958	00959	00960
1ft	27130	27140	27150	27170	27180	27190	27810	27800	27160	04043
1.5ft	03965	03973	03981	03989	03998	04007	04016	04025	04034	04044
2ft	27131	27141	27151	27171	27181	27191	27811	27801	27161	04045
2.5ft	03966	03974	03982	03990	03999	04008	04017	04026	04035	04046
3ft	31340	31341	31342	31344	31345	31346	31348	31347	31343	04047
4ft	03967	03975	03983	03991	04000	04009	04018	04027	04036	04048
5ft	27132	27142	27152	27172	27182	27192	27812	27802	27162	04049
6ft	03968	03976	03984	03992	04001	04010	04019	04028	04037	04050
7ft	03969	03977	03985	03993	04002	04011	04020	04029	04038	04051
8ft	27133	27143	27153	27173	27183	27193	27813	27803	27163	04052
9ft	03970	03978	03986	03994	04003	04012	04021	04030	04039	04053
10ft	27134	27144	27154	27174	27184	27194	27814	27804	27164	04054
10ft	22016	22015	22014	03995	04004	04013	04022	04031	04040	04055



27140



27180



27170



27810

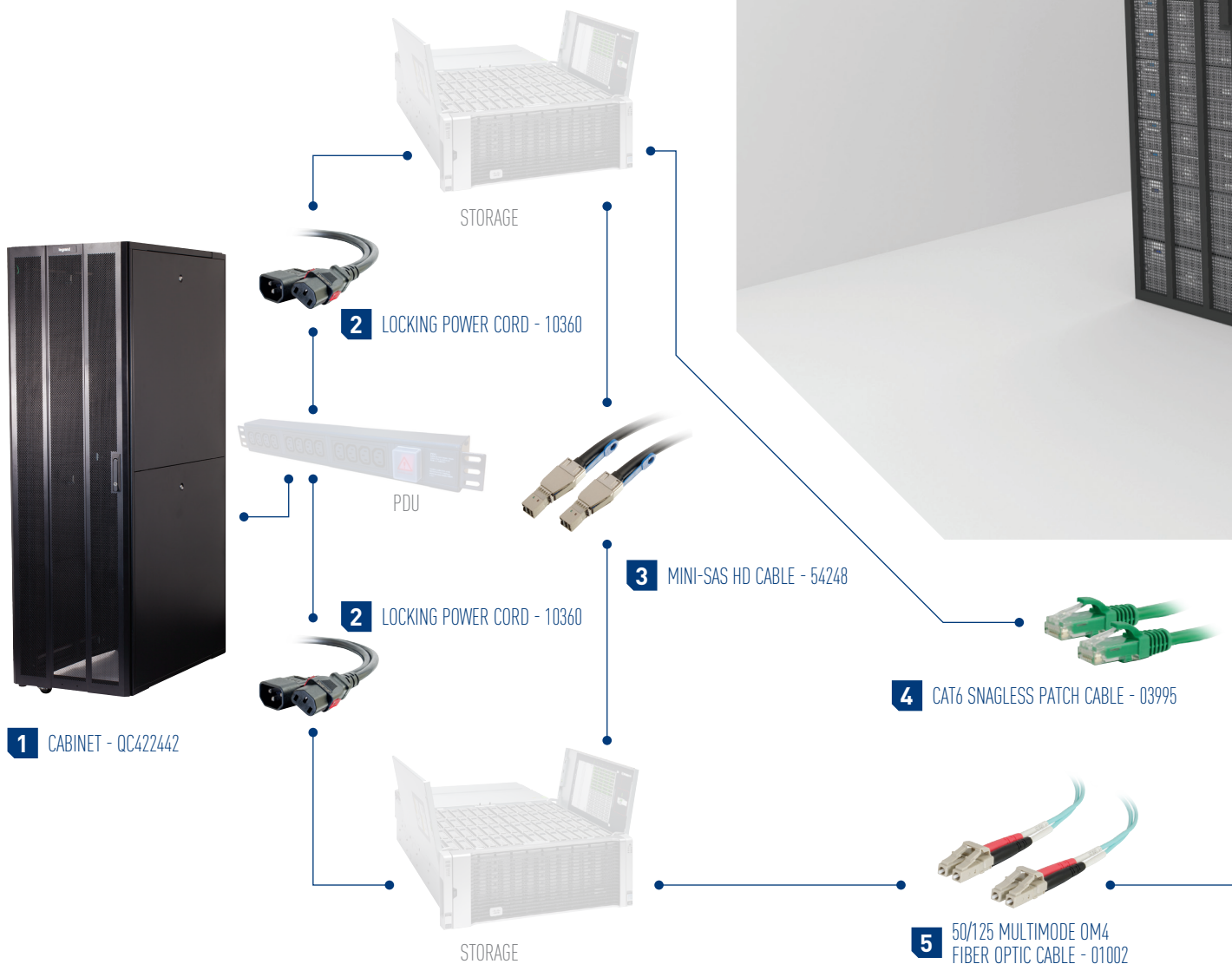


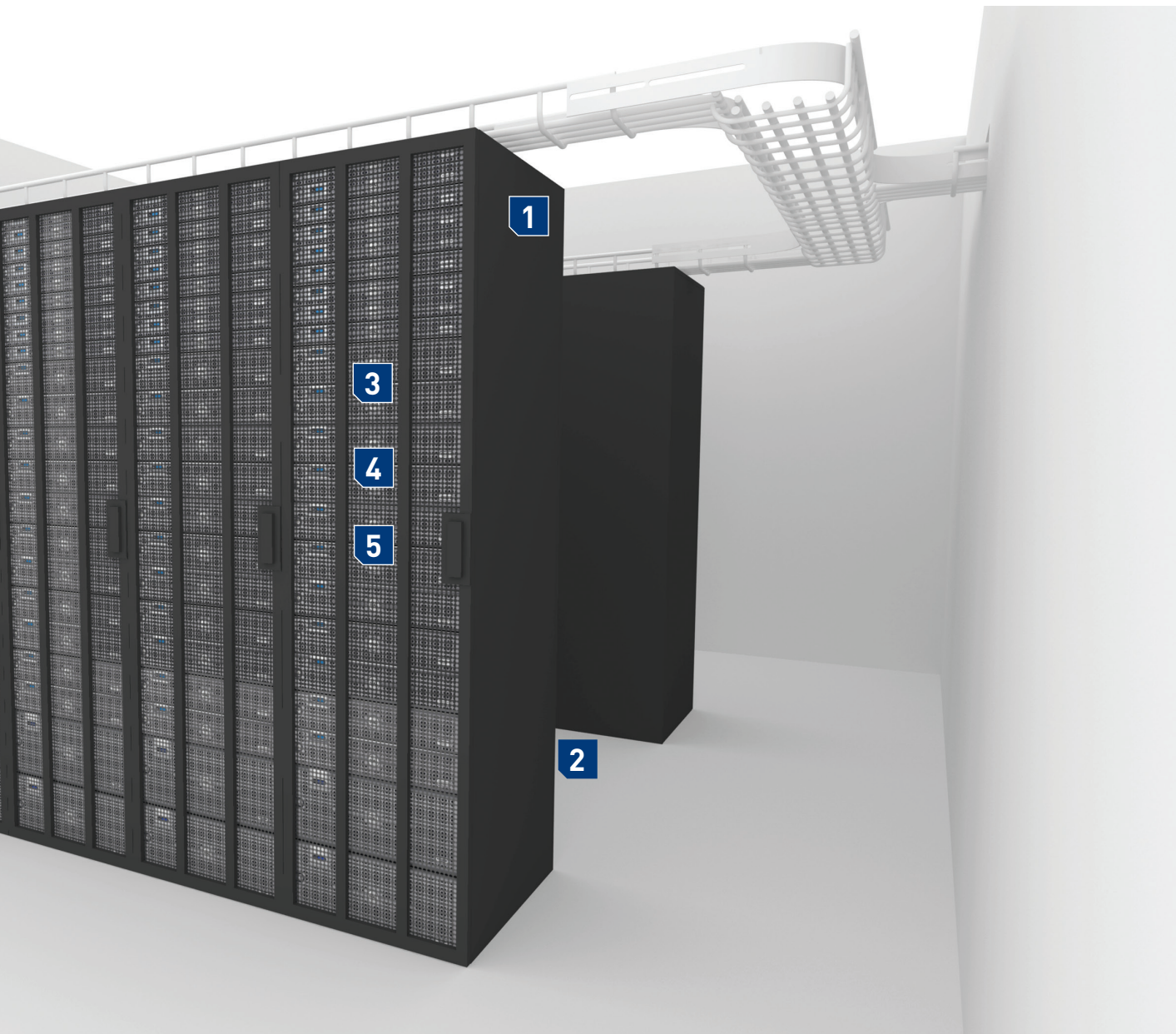
27150

Note: Cat6 or Cat6a options may be necessary based on the network application.

STORAGE COMPLETE SOLUTION

Storage is the part of the data center that protects and houses information and important files that would be devastating to lose. Storage provides the data protection and recovery capabilities for businesses to function. Always use dependable connectivity to a network storage device, because downtime can be costly and disastrous.

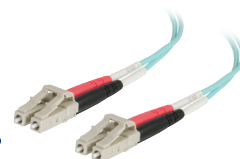




SWITCH



FIBER SWITCH

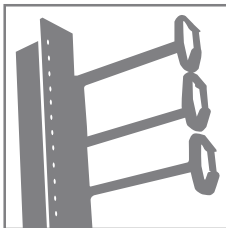


5 50/125 MULTIMODE OM4
FIBER OPTIC CABLE - 01002

PRODUCTS & SOLUTIONS OF SIMPLIFIED CONNECTIVITY

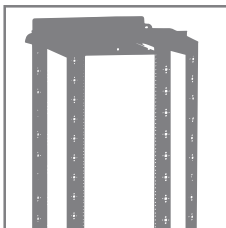


PHYSICAL INFRASTRUCTURE



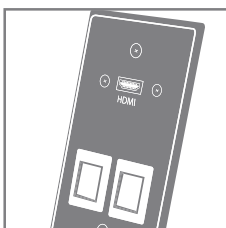
CABLE MANAGEMENT

Horizontal Managers
Vertical Managers
Wiremold® Raceway
Ceiling, Table, and Floor Boxes



RACKS & CABINETS

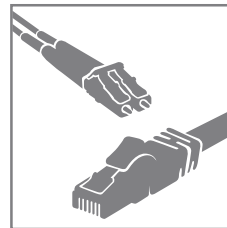
2-Post Racks
4-Post Racks
Cabinets
Wall Mount Racks



WALL PLATES & POKE-THRU

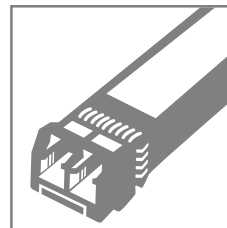
Decorative Style Plates
Single and Multi-Gang
Pass Throughs
Custom Wall Plates

DATA CONNECTIVITY



COPPER & FIBER

Cat5e & Cat6a
OM1-OM4 Multimode Fiber
OS2 Single-Mode Fiber
Custom Fiber & Copper

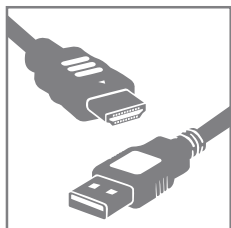


TRANSCIVERS & DIRECT ATTACH

Transceivers
Direct Attach Cables
Media Converters
Custom Transceivers
Custom Direct Attach Cables



AUDIO/VIDEO & PC



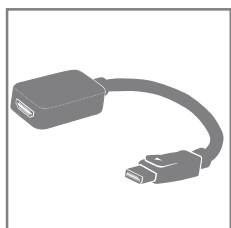
CABLES

USB Cables
HDMI® Cables
DisplayPort™ Cables
Mini-DisplayPort Cables



ACTIVE DEVICES

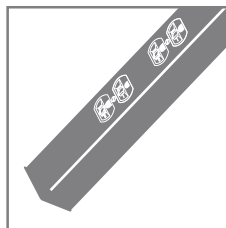
Switches
Splitters
Extenders
Wireless



ADAPTERS & CONVERTERS

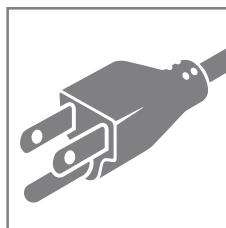
Digital to Digital
Digital to Analog
Analog to Digital
Multi-Input/Output

POWER MANAGEMENT



POWER STRIPS

Medical
Surge
Plugmold®
Rack Mount



POWER CORDS

Universal
Extension
Locking
Color



©2017 Legrand All Rights Reserved rev.11/17 13869 - Catalog

C2G[®]
A brand of  **legrand**[®]

3555 Kettering Blvd.
Moraine, OH 45439
Phone: 800.CABL.911
www.c2g.com

Follow Us

